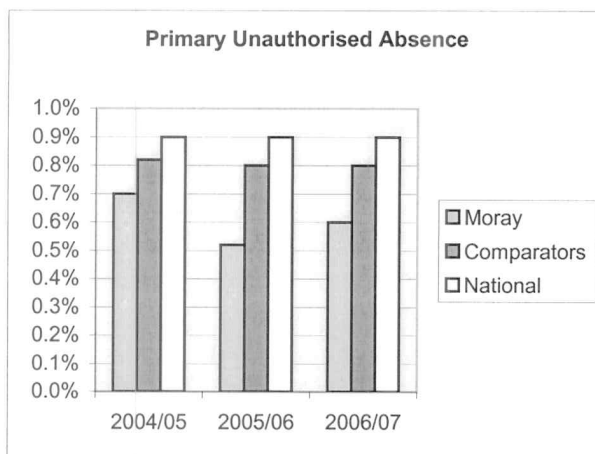
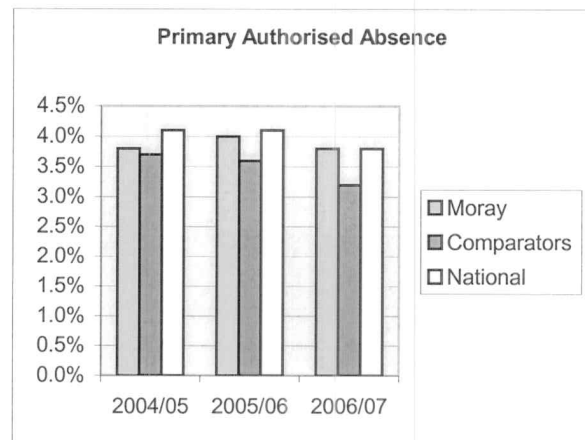
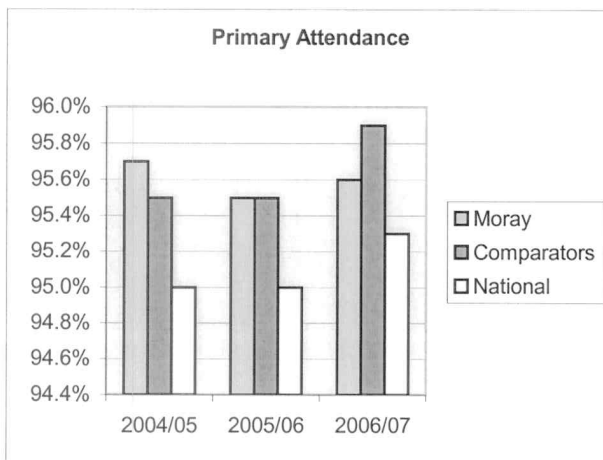


2) Our young people are successful learners confident individuals, effective contributors and responsible citizens

Attendance and Absence

Attendance at Moray Primary Schools' [19] increased by 0.1% to 95.6% in 2006/07, remaining above the national average which increased by 0.3% to 95.3%, however below comparator authorities' average of 95.9%. In Moray, attendance since 2004/05 had decreased by 0.1% but remained relatively consistent over that period. Both national and comparator authorities' averages have increased since 2004/05.

Primary	Attendance			Authorised Absence			Unauthorised Absence		
	2004/05	2005/06	2006/07	2004/05	2005/06	2006/07	2004/05	2005/06	2006/07
Moray	95.7%	95.5%	95.6%	3.8%	4.0%	3.8%	0.7%	0.5%	0.6%
Comparators	95.5%	95.5%	95.9%	3.7%	3.6%	3.2%	0.8%	0.8%	0.8%
National	95.0%	95.0%	95.3%	4.1%	4.1%	3.8%	0.9%	0.9%	0.9%

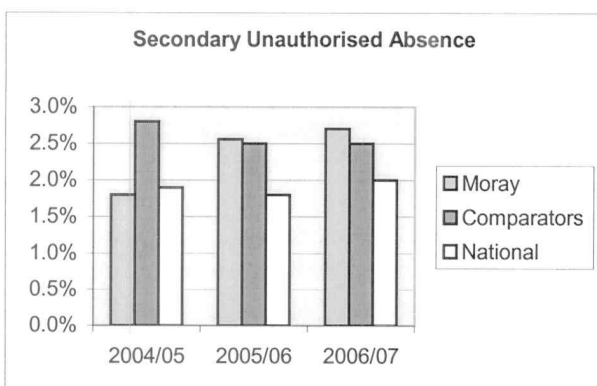
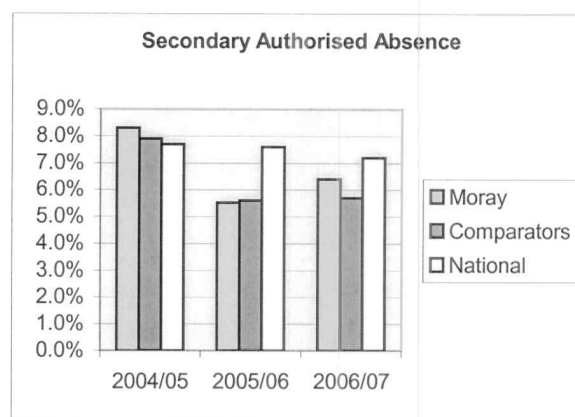
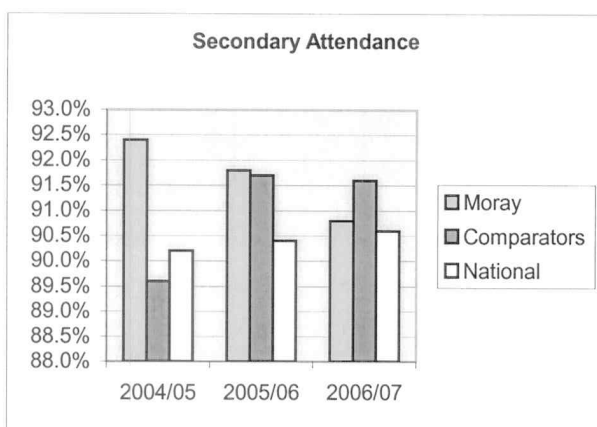


The level of unauthorised absence at Moray Primary Schools increased by 0.1% to 0.6% in 2006/07, remaining below national and comparator authorities' average levels, which have remained static at 0.9% and 0.8% over the last 3 years. Authorised absence, in Moray, has remained relatively static at 3.8%, where comparators and national levels have dropped.

Attendance at Moray Secondary Schools [19], when comparing results with 2005/06, had decreased by 1%. (There had been a 0.9% increase in authorised absence during the same period). Incorrect coding of study leave

within one secondary school adversely affected 2006/07 published figures. Accepting the 2006/07 results as published, Moray remains above the national average but below comparator authorities' average. There would be a positive change in its position against comparator authorities when taken into account the coding error.

Secondary	Attendance			Authorised Absence			Unauthorised Absence		
	2004/05	2005/06	2006/07	2004/05	2005/06	2006/07	2004/05	2005/06	2006/07
Moray	92.4%	91.8%	90.8%	8.3%	5.5%	6.4%	1.8%	2.6%	2.7%
Comparators	89.6%	91.7%	91.6%	7.9%	5.6%	5.7%	2.8%	2.5%	2.5%
National	90.2%	90.4%	90.6%	7.7%	7.6%	7.2%	1.9%	1.8%	2.0%

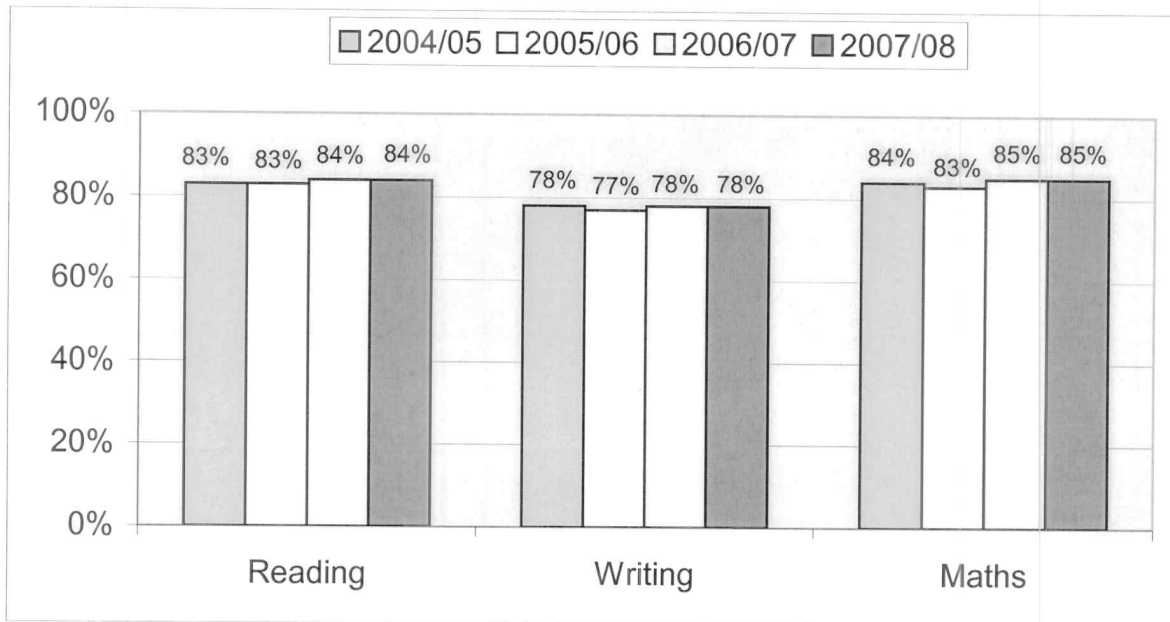


The level of unauthorised absences in Moray Secondary Schools had increased from 2005/06 by 0.1% to 2.7%, remaining above comparator authorities' average of 2.5% and the national average of 2%. Unauthorised absence has increased by 0.9% since 2004/05.

Attainment

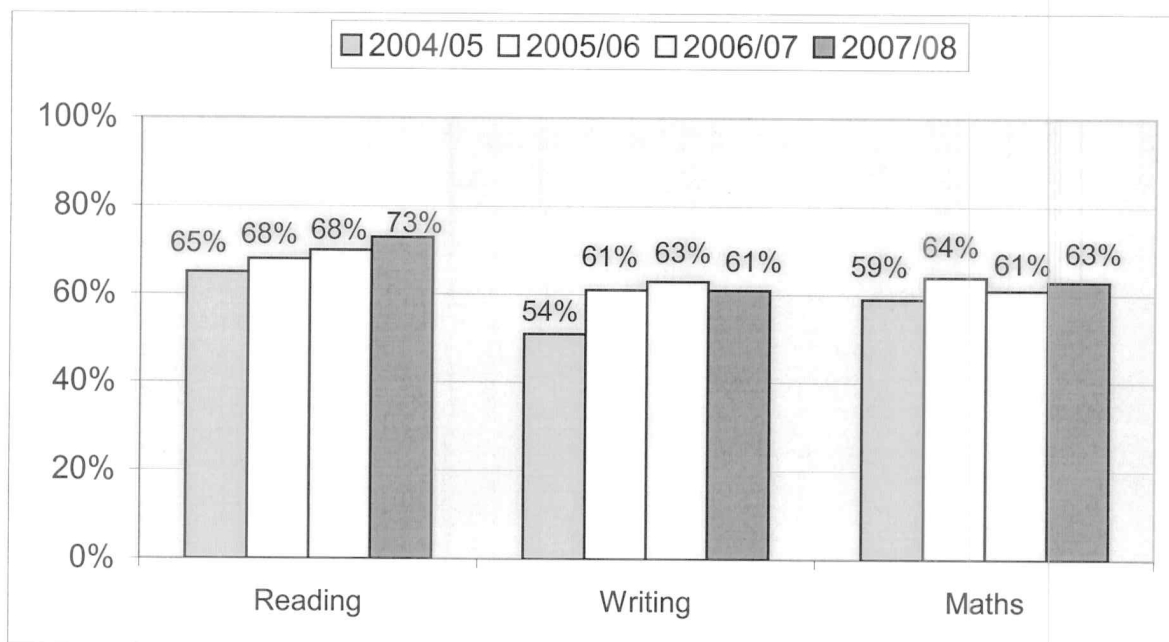
Although the information is no longer collected nationally, many local authorities monitor 5-14 attainment in relation to the percentage of pupils attaining or exceeding 5-14 levels for their age. For primary and secondary schools the 5-14 indicators cover the core skills of reading, writing and mathematics.

Primary	2004/05	2005/06	2006/07	2007/08
Reading	83%	83%	84%	84%
Writing	78%	77%	78%	78%
Maths	84%	83%	85%	85%



In reading, writing and mathematics, results in Moray Primary Schools remained unchanged from the previous years' performance with 84% of pupils in reading, 78% in writing and 85% in maths achieving or exceeding expected levels. In 2006/07, primary pupils attaining or exceeding 5-14 levels for their age in Moray were ranked 3rd equal in Reading, 3rd in Writing and 4th in Mathematics against Moray's five comparator authorities.

Secondary	2004/05	2005/06	2006/07	2007/08
Reading	65%	68%	70%	73%
Writing	51%	61%	63%	61%
Maths	59%	64%	61%	63%



In two of the three areas there was an improvement in performance in Moray Secondary Schools in 2005/06. In 2006/07, there was a further 2% improvement in the performance for reading and writing but a drop of 3% in mathematics. In 2007/08, there was a further 3% increase in reading to 73%, a 2% improvement in Maths to 63% but performance in writing dropped by 2% to 61%. In 2006/07, secondary pupils attaining or exceeding 5-14 levels for their age in Moray were ranked 1st in Reading, 1st in Writing and 3rd in Mathematics against four comparator authorities (the fifth comparator authority no longer records secondary 5-14 results).

In general, in years three and four, young people in Moray secondary schools follow national qualifications courses or Standard Grade. Qualifications can be compared using the Scottish Credit and Qualifications Framework (SCQF). The framework concerns the way in which qualifications can be compared in order to simplify progression between them. Moray's pupils achieve good results throughout their primary school years and through to S4. Results for S5 and S6 are not as good as national and comparator authorities and require more work [20].

Term	Explanation
Level 3	Standard Grade at Foundation Level or Access 3
Level 4	Standard Grade at General Level or Intermediate 1
Level 5	Standard Grade at Credit Level or Intermediate 2
Level 6	Higher Grade at A-C

Percentages of S4 roll attaining, by the end of S4:

	English at Level 3 or better			Maths at Level 3 or better		
	2005/06	2006/07	2007/08	2005/06	2006/07	2007/08
Moray	96	96	94	96	96	94
Comparators	94	94	94	92	95	93
National	94	94	94	93	93	94

	English & Maths at Level 3 or better			5 or more awards at Level 3 or better		
	2005/06	2006/07	2007/08	2005/06	2006/07	2007/08
Moray	94	94	92	92	93	90
Comparators	90	92	91	90	91	90
National	91	92	91	91	91	90

	5 or more awards at Level 4 or better			5 or more awards at Level 5 or better		
	2005/06	2006/07	2007/08	2005/06	2006/07	2007/08
Moray	80	83	80	36	35	37
Comparators	78	78	77	35	35	36
National	76	76	76	34	33	34

Results for S4 students in Moray have decreased in all but one of the six categories since last year, however Moray remain equal to or above the national average in all areas. Nationally attainment has remained relatively static over the last three years with 4 areas staying the same, 1 area improving and 1 decreasing. Comparator authorities gained some ground on Moray with 3 areas improving, 1 decreasing while the other 2 areas have

remained static. The 2006/07 Education Service Improvement Plan actions included improving performance for students gaining five or more awards at Level 5, which was achieved with 37%, exceeding a target of 36%, a 1% increase over the last three years.

Moray has five comparator authorities - Angus, Dumfries and Galloway, Falkirk, Highland and Scottish Borders. Moray was ranked 1st or 2nd in attainment in Maths at Level 3, English and Maths at Level 3, five or more awards at Levels 4 and 5 and ranked 4th in the remaining two categories of English at Level 3 and five or more awards at Level 3.

Percentages of S4 roll attaining, by the end of S5:

	1 or more awards at Level 6 or better			3 or more awards at Level 6 or better		
	2005/06	2006/07	2007/08	2005/06	2006/07	2007/08
Moray	38	40	41	20	20	21
Comparators	40	40	40	23	22	23
National	38	39	38	21	22	22

	5 or more awards at Level 6 or better		
	2005/06	2006/07	2007/08
Moray	9	8	7
Comparators	10	9	10
National	9	10	10

Level 6 results for S5 pupils in Moray have increased in two of the three categories from the previous years' performance, whereas nationally, results remained unchanged or decreased. Moray remains above the national average in pupils achieving one or more award at Level 6 but below in the two remaining categories.

Against comparators, Moray ranked 2nd in attainment in one or more awards at Level 6 and 5th in three and five or more awards at Level 6.

Percentages of S4 roll attaining, by the end of S6:

	1 or more awards at Level 6 or better			3 or more awards at Level 6 or better		
	2005/06	2006/07	2007/08	2005/06	2006/07	2007/08
Moray	44	43	45	29	27	31
Comparators	45	44	44	31	31	30
National	43	42	43	30	29	30

	5 or more awards at Level 6 or better			1 or more awards at Level 7 or better		
	2005/06	2006/07	2007/08	2005/06	2006/07	2007/08
Moray	18	18	19	12	11	13
Comparators	21	21	19	14	13	13
National	20	19	19	13	12	12

Moray's performance has improved in all four categories in S6, and is now equal to or above national averages in all categories. Nationally, performance

from the previous year has remained unchanged in two categories and increased in two categories.

Against comparators, Moray ranked 3rd in attainment in one or more awards at Levels 6 and 7 and 4th in three and five or more awards at Level 6.

Schools – Environmental, Travel and Healthy Eating

Eco-Schools is an international initiative designed to encourage whole-school action for the environment. It is an environmental management tool, learning resource and recognised award scheme. Moray schools have embraced national initiatives, which support wider achievement of its pupils. In 2007/08, 98% of Moray schools are registered Eco Schools, which is higher than the national average of 91%.

Percentage and number of school participating in the Eco Schools award or similar accredited environmental award –

2007/08	Registered	Bronze Award	Silver Award	Green Flag Award
Primary	100% (46)	83% (38)	50% (23)	7% (3)
Secondary	88% (7)	75% (6)	25% (2)	13% (1)

The Moray Council has a dedicated team working with schools to develop and implement the travel planning process. In 2008, the team conducted a 'Hands Up' survey with 6,212 (88% of the total school roll using September 2007 census data) Primary and 2,878 (48% of the total school roll using September 2007 census data) secondary school pupils participating –

Primary		Secondary	
Walk	48%	Walk	46%
Car	31%	Car	15%
Bus	12%	Bus	30%
Park and Stride	4%	Park and Stride	4%
Cycled	2%	Cycled	5%
Taxi	2%	Taxi	1%
Scooter / Skateboard	1%	Scooter / Skateboard	-

In 2006/07, 83% of Moray schools were engaged in the travel planning process with 15% of schools having completed travel plans. School Travel Plans aim to stem the decline in the number of children taking an active journey to school, offer a holistic approach to infrastructure improvements that prioritise active modes, improve safety for all users and draw effective links with supporting policies, i.e. Eco Schools, Health Promoting Schools, Active Schools and Local/Regional/National Transport Policies.

The Moray Council have taken measures to improve safety and access for active modes by introducing 20mph speed limits outside schools; by providing safe, secure cycle parking at 21 schools totalling 660 spaces, 410 of which are within fully enclosed, locking compounds; by undertaking footway

improvements and establishing cycle routes between schools and key areas of housing; by introducing School Travel Awards and Travel Smart incentive schemes to celebrate success and share best practice and reward active travel as well as setting up walking buses and cycle trains; by educating parents and pupils about active travel in holding School Travel Awareness days, including travel surveys and route planning; organising walk/cycle to school weeks; participating in assembly and classroom talks and offering induction and open days for parents.

The Moray Council is compiling information to feed into the 2008 Sustrans national survey with results expected in Spring 2009.

Health promotion schools encourage children and young people to eat well and to exercise encompassing a broad holistic 'whole school' approach that includes promoting the physical, social, spiritual, mental and emotional well-being of all pupils and staff.

As at November 2007, 21 of the 54 primary and secondary schools in Moray have achieved 'commitment' status and 8 schools have achieved 'commended' as Health Promoting Schools.

Extra Curricular / Community Involvement

Moray pupils contribute to both school and community life. Pupils participated in theatre through the Elgin Macbeth, a Highland 2007 event between Moray Council and the National Theatre of Scotland. A professional cast of 5 and a professional production team worked for 9 months with 60 community members including a Gaelic choir and musicians and 160 pupils from 5 Moray secondary schools. 800 people attended the performances held in June 2007 in the ruins of Elgin Cathedral. Schools also created visual arts installations in various parts of the cathedral.

In terms of sport, 1,500 children were involved in the Council's term time and holiday sports coaching programme in 2006/07. In the past year at least 18 young people have competed in sporting activities at a national / international level. In 2007/08, 1,248 P3-P7 pupils participated in after school 'Stay and Play' activities.

Moray pupils also regularly participate in musical groups with approximately 75% of instrumental instruction pupils participating in school groups. 265 pupils attend the Moray Music Centre on a weekly basis with another 75 participating in the weeklong Moray School Orchestra course. 20 pupils from Fochabers Fiddlers have toured America while another 60 pupils toured Europe with Moray Concert Brass. Moray Concert Brass have placed or won the Scottish Brass Championship for the last three years. Approximately 25 pupils per year take part in the National Youth Orchestra for Scotland, National Youth Choir and National Fiddle Competitions, which is slightly above average compared to other local authorities without specialist music schools. The Moray Music Festival is held every two years over a 10-day period and provides an opportunity to compete in music, dance, speech and

drama for both adults and children. In 2007, 32 of the 46 primary schools and 8 of the secondary schools had entries in the Festival.

Summary and emerging trends

- In 2006/07, attendance in Moray Primary Schools remained relatively static over the last three years while national and comparator levels have increased
- Unauthorised absence in Moray Primary Schools as with comparator and national averages have remained relatively static
- It was anticipated that, taking account of a coding error, attendance in Moray Secondary Schools would be above national average levels in 2006/07
- In 2006/07, unauthorised absence in Moray Secondary Schools was above national and comparator authorities' average levels
- Performance in the percentage of primary pupils in Moray attaining or exceeding 5-14 levels for their age in the core skills of reading, writing and mathematics improved between 2005 and 2007 but remained unchanged in 2008
- In 2008, there was a further improvement in the percentage of secondary pupils in Moray attaining or exceeding 5-14 levels for their age in reading and mathematics but a drop in performance for writing
- In 2008, S4 attainment levels were ahead or equal to that of national and all other comparator authorities' averages in all six indicators
- In 2008, performance in S5 attainment for Higher Grades was below national and comparator authorities' averages in two of the three indicators
- In 2008, performance in S6 attainment for Higher Grades was ahead or equal to national averages in all four indicators
- 98% of schools in Moray are registered Eco-Schools, above the national average
- In 2006/07, 83% of Moray schools are engaged in travel planning process, 15% have completed travel plans
- As at November 2007 54% of schools in Moray had achieved either 'commitment' or 'commended' status as Health Promoting Schools
- Pupil Council have been established in all schools in Moray, Parent Councils have been established in 53 of 54 schools

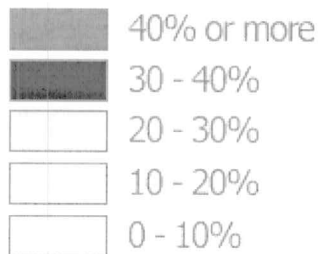
3) Our children have the best start in life and are ready to succeed

Child Poverty



Colour Key:

% of children in families on out of work benefits



Map of child poverty levels by Local Authority.

End Child Poverty [24] use tax credit data to give the percentage of children on low incomes in local authorities across the UK. Although not a direct measure of exactly how many children are in poverty, it is a good indication of which areas have the highest child poverty levels and the closest measure at the moment of local levels of child poverty. The End Child Poverty indicator considers all children whose families receive the maximum Child Tax Credit because they have low incomes, whether working or on benefits. They are divided into two groups:

Children in workless families shows how many children are in families claiming tax credits who also depend on benefits, because nobody in the family is working (or nobody is working for more than 16 hours a week). These tend to be the poorest families. Without a working parent, a child has a three in four chance of being in poverty.

Children in families receiving the Working Tax credit indicates how many children are in the poorest working families – those entitled to maximum Child Tax Credit, plus a Working Tax Credit entitlement related to their earnings. One in three of such children do not escape family poverty even with the help of the tax credit, and half have incomes that are below or only just above the poverty line.

Adding these two groups together gives a total of children in low-income families. This comprises about four in ten children. While not all these children are classified as being in poverty, they represent a wider group of “have-nots” among children in the UK, which allows a comparison of the severity of the problem in different local authorities and parliamentary constituencies.

Results for August 2005 show that Moray has a child poverty level of 13%, below the average level of 19% amongst the 59 Scottish constituencies. Glasgow North East at 44% has the highest level of child poverty and at 7%;

East Dumbartonshire, Gordon and West Aberdeenshire and Kincardine have the lowest level of child poverty.

Low Birthweights

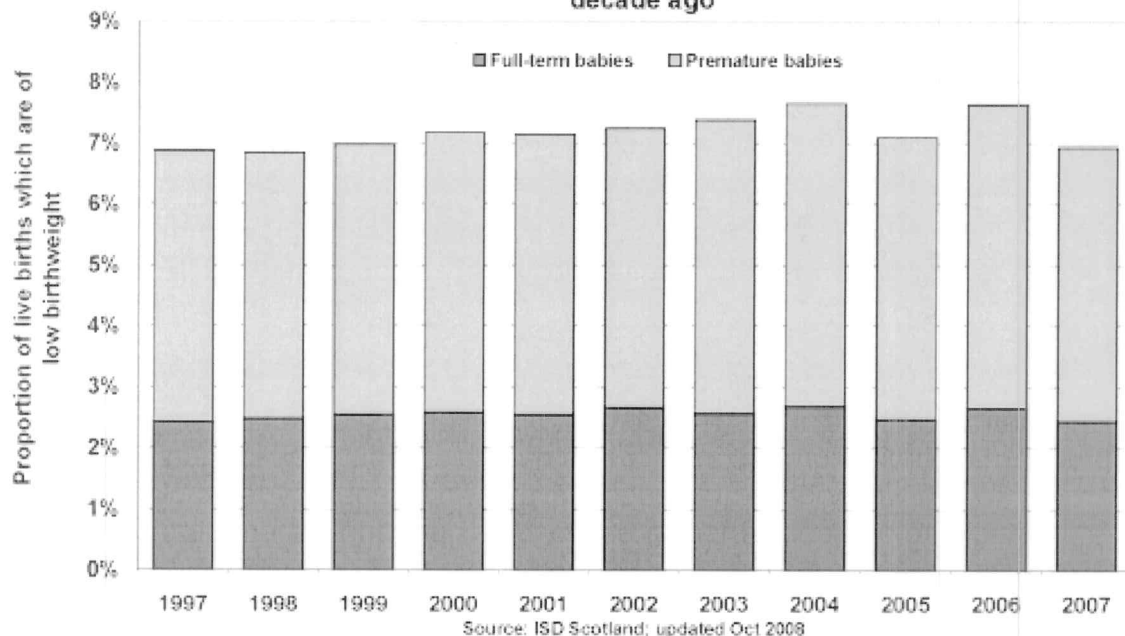
The Scottish Morbidity Record (SMR02) [25] [26] is submitted by maternity hospitals to ISD Scotland. This data scheme collects data on inpatient and day case activity in the specialty of obstetrics. A wide range of information is collected, including: mother's age, height, smoking history and previous obstetric history; outcome of pregnancy, mode of delivery, induction and analgesia; and baby's birthweight, gestation, apgar score and gender. This information has been collected since 1975. Although there is no legal requirement to submit this data to ISD, the SMR02 data scheme achieves national coverage of 98% of all births and pregnancies.

The Information Service Division (ISD), Scotland's national organisation for health information and statistics report that the proportion of babies who are of low birthweight is similar across most of Scotland and has remained relatively unchanged over the last decade.

A number of factors have been shown to be associated with low birthweight (i.e. 2.5 kilograms / 5.5lbs) and/or preterm births. These include maternal smoking, maternal age (older and younger mothers are more likely to have a low birthweight baby), deprivation, previous obstetric history, low pre-pregnancy maternal weight, drug/alcohol use, hypertension and multiple births.

Over time -

The proportion of babies born with a low birthweight is similar to a decade ago

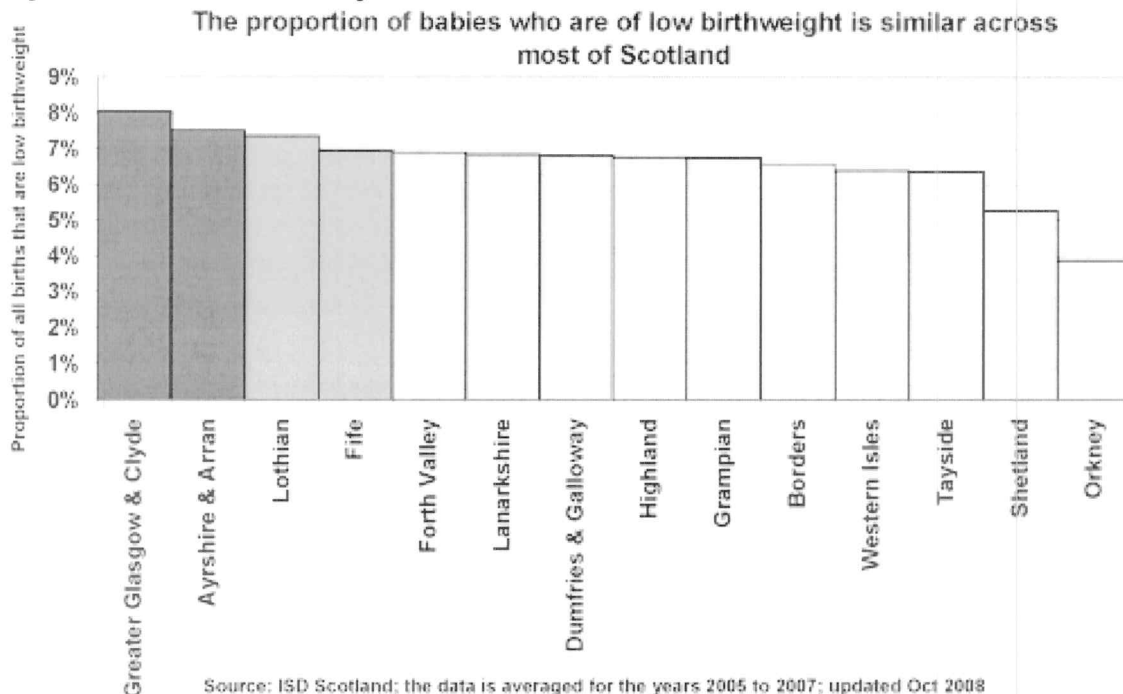


The graph shows the proportion of live births who are defined as having a low birth weight, i.e. less than 2.5 kilograms (5.5lbs). The data is shown

separately for full-term and premature babies. The data is for all live births, both premature and full-term and for singleton and multiple births. It excludes still-births, home births and births at non-NHS hospitals.

Low birthweight babies face a range of future health problems both immediate and longer-term: poor health in the first four weeks of life, a higher risk of death before the age of two and delayed physical and intellectual development in early childhood and adolescence among them.

By local health authority



The graph shows how the proportion of live births that are of a low birthweight varies by NHS Health Board. To improve statistical reliability, the data is the average for the latest three years.

Provisional statistics report that for the year ended 31st March 2007 in Grampian 6.96% (409) of all births were of a low birthweight, against a Scottish average of 7.15% (3,956). Results differ only slightly from those a decade ago, as at March 1997, in Grampian 6.3% of births were of a low birthweight against a Scottish average of 7.2% for the same period. Statistics at a Moray level are not available.

Smoking during Pregnancy

Smoking behaviour in pregnancy is collected at a woman's first antenatal booking appointment which usually takes place within the first three months of pregnancy. These booking appointments take place either at hospital or in the community and are recorded on the Scottish Morbidity Record (SMR02). There is considerable pressure on women not to smoke during pregnancy, and it is anticipated that some women may not be completely truthful when describing their smoking behaviour at the booking clinic.

ISD Scotland provision statistics report that in Grampian, for the period ended 31st March 2007, at a woman's first antenatal booking appointment, for the 5,781 bookings recorded, 69.8% stated that they had never smoked, 20.3% stated that they were currently smoking and 7.8% stated that they were former smokers. Nationally, for the same reporting period, 57.7% had never smoked, 20.9% were currently smoking and 9.5% were former smokers. Overall, levels of smoking recorded at a woman's first antenatal booking appointment have decreased since 1998 although increases during the period are evident.

Children's Dental Health

Moray experiences difficulties in attracting dentists. As at September 2007, dental registration for children in Moray was 52.3%, well below the national average of 69.9%.

Life Expectancy

The General Register Office from Scotland statistics show that, for the years 2005-2007, the life expectancy at birth in Moray for males was 75.9 years, above the national average of 74.8 years and for women was 80.2 years, above the national average of 79.7 years. Overall the life expectancy at birth in Moray at 78.0 years is above the national average of 77.4 years.

Pre-School Provision

In Moray [27] in 2008, there were 55 local authority or partnership pre-school education providers in Moray, 22 were local authority pre-school education providers and 33 providers were in partnership with the local authority.

There were 690 registrations for the ante-pre-school year of pre-school education in Moray representing 96.9% of all children eligible, above the national result of 94.2%.

There were 850 registrations for the pre-school year of pre-school education, representing 102.9% of all children eligible, above the nation result of 98.3%.

The percentage of children attending pre-school education in an area can exceed 100% due to double counting or children commuting from their home areas to attend pre-school provision in another local authority area.

Based on the 2008 census data received, in Moray 40 children registered for pre-school education did not have English as their home language, 2.1% of all registrations, below the national average of 4.4%. Seventy children were reported as having Additional Support Needs, 4.2% of all registrations, which was below the national average of 5.5% and 20 pre-school children, had a Co-ordinated Support Plan, 1.4% of all registrations, above the national average of 0.7%.